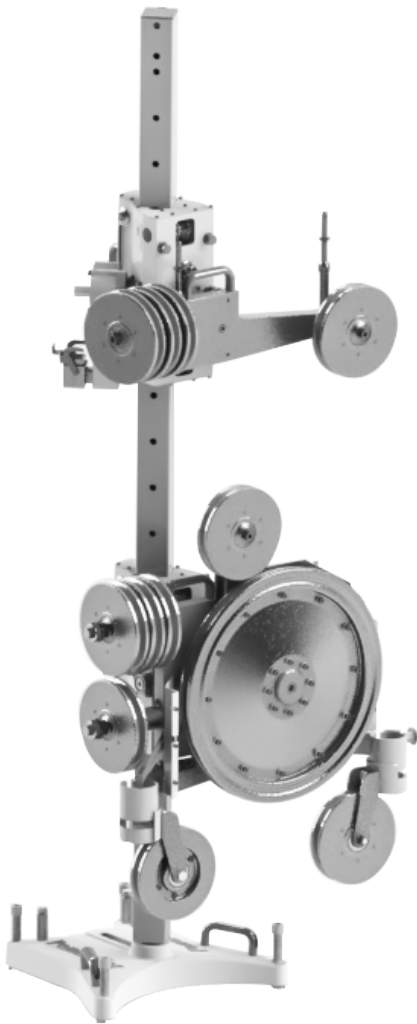


Pentruder

3P8



Combines low weight with extraordinary performance for both small and big jobs

- Combines low weight with extra ordinary performance and is suitable for both small and very big jobs.
- Recommended to use with the 18 or 22 kW HF-motor or a hydraulic motor.
- Quick set up and easy thanks to the modular build up. Mostly a direct cut without extra satellite pulleys is possible.
- All of the wire saw modules weigh less than 25 kg.
- The start of the wire is very easy thanks to the electrical automatic feed and high power of the drive motor.
- The automatic feed makes it very easy to run the saw and it also extends the lifetime of the wire.
- Optimal force transmission thanks to Ø 500 mm main drive pulley. The wire wraps around the main drive pulley 270°, which gives superb traction also when the wire has low tension during start up.

Technical Data Pentrunder 3P8 HF wire saw

Specifications

Power

Drive motor 400 Hz High Frequency Motor
18, 22 or 27 kW

Max continuous
output power 18 kW

Pulleys

Main drive pulley Ø 500 mm (20")

Storage pulleys Ø 198 mm O.D

Wire

Wire Ø 8-12 mm

Storage

Storage in pulleys 6.5 meters
Storage capacity 8 meters per m stroke of
the carriage,
Max approximately 20 m

Weight wire saw modules

3P8-DP-HF Drive pulley, electric: 13.9 kg

3P8-UA Upper assembly: 14.9 kg

3P8-LA Lower assembly: 19.7 + 12.7 kg

Recommended start package 3P8 wire saw

Same HF drive system as the wall saws for less overall investment

HF drive system



22kW HF-motor



Pentpak 427



WRC Wireless Remote Control

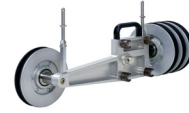


400 V Cable



24 V Cable

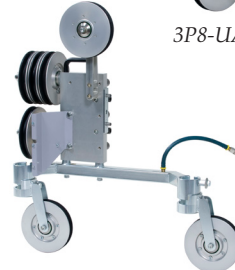
Wire saw modules



3P8-UIA Upper assembly



Slip clutch for HF-motor

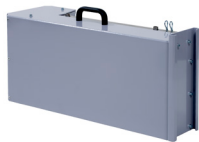


3P8-LA Lower assembly



3P8-DP-HF Drive pulley, electric

Wire saw guard



3P8-TG Guard, upper assembly



3P8-DPG Guard, drive pulley



3P8-LMG Guard, storage pulleys



3P8-SSG Guard, slack side telescoping guard

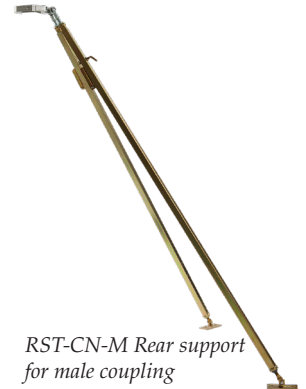
Rig 70 mm column system



CE1-70-3P8 Upper carriage, automatic feed



CN-F/M column, Female/Male coupling 1.2 m x 2



RST-CN-M Rear support for male coupling



CE1-70 Carriage, with FE1 Friction brake



BFC5 Base plate with fixed swivelling coupling

Accessories



WSP2-90 Satellite pulleys, universal, 2-link, 90°



WSP2-180 Satellite pulleys, universal, 2-link, 180°



WSP1-F Satellite pulley, single, flush



HK-1 Hand crank



Covers for digital connectors



Toolkit